




[www.emwstainless.com](http://www.emwstainless.com)

 235 41 Avenue NE, Calgary AB T2E 2N4

 403 919 5271

 587 353 1150

 [sales@emwstainless.com](mailto:sales@emwstainless.com)  
[sandeep@emwstainless.com](mailto:sandeep@emwstainless.com)



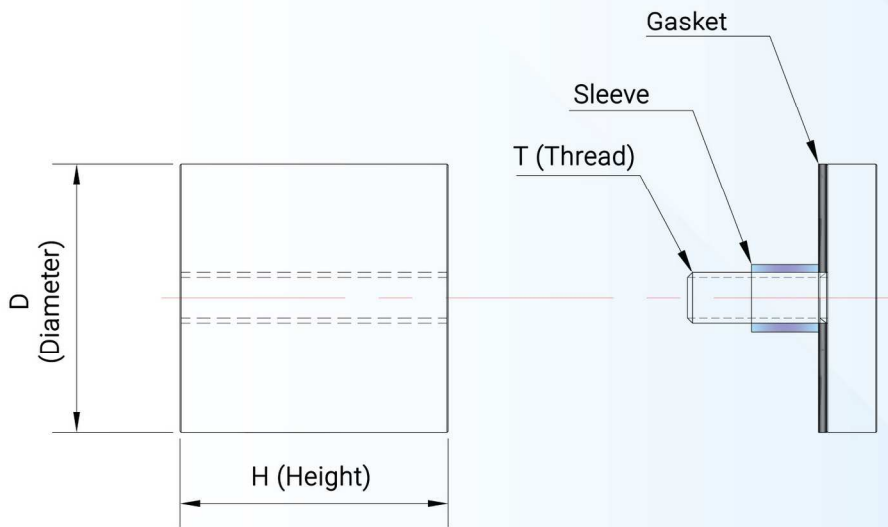
## STAINLESS STEEL STAND OFF **FOR GLASS PANELS**

Stand-offs are a clean and simple way to support point supported Glass Panels and are truly the perfect compliment for Architectural Design.

These Stand-offs are ideal for applications include frame-less guardrail systems, glass Display panels mounted to walls or signage panels and Decorative applications and can be mounted on wood, steel, concrete, or HSS profiles.

We manufacture all our standoffs at our shop based in Calgary. Our Stand-offs delivers the best Quality in the market with an unbeatable consistency.

We can manufacture stand-off with custom designs, Please call or Email us with specifications.



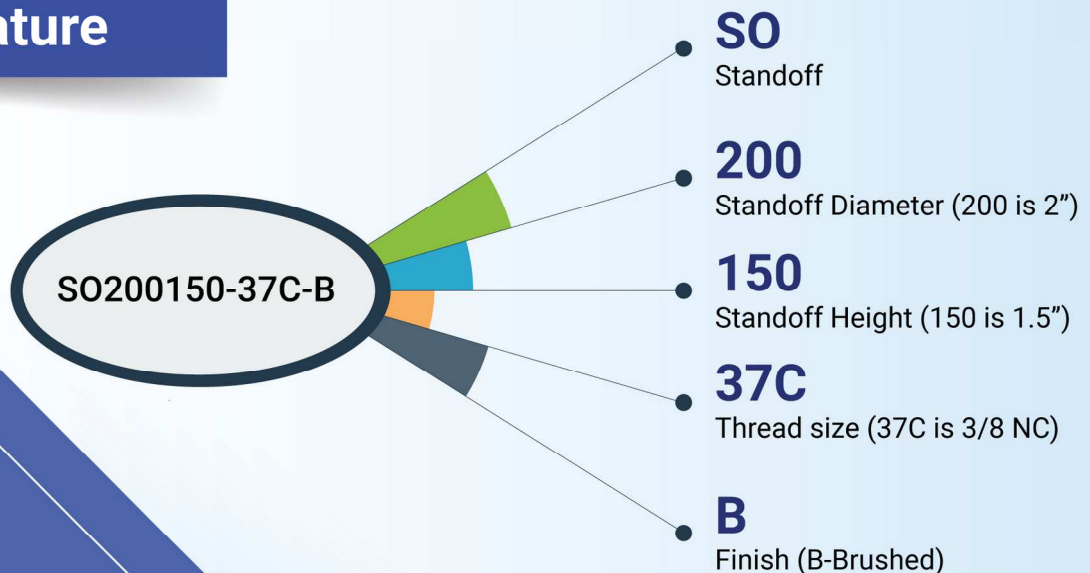
# STAND-OFF SYSTEM



A stand-off assembly is usually consists of Standoff base and Cap. EMW Stainless steel has wide range of stand-off assemblies to choose from.

EMW stainless makes Standoff from Diameter ½" to 4" and from length ½" to 10"

## Stand Off Base Nomenclature



# STAND OFF BASE

1/2" Diameter standoff are ideal for light duty glass displays or signage. Mirror Finished standoff can be available upon request

**NOTE**

For the Stand-offs with Height longer than 2", the thread depth for barrel is maximum to 1" on each side.

Ex. Standoff SO050500 will have 1 inch thread depth on each side.

## 1/2" (D) Diameter

Height (H)	Thread (T)
	1/4NC
1/4"	SO050025-25C-B
1/2"	SO050050-25C-B
3/4"	SO050075-25C-B
1"	SO050100-25C-B
1-1/2"	SO050150-25C-B
2"	SO050200-25C-B
2-1/2"	SO050250-25C-B
3"	SO050300-25C-B
3-1/2"	SO050350-25C-B
4"	SO050400-25C-B
5"	SO050500-25C-B
6"	SO050600-25C-B

**STAND OFF CAP**  
Please See Page #9

## 3/4" (D) Diameter

**STAND OFF CAP**  
Please See Page #9

Height (H)	Thread (T)				
	1/4NC	5/16NC	3/8NC	1/2NC	1/2NF
1/4"	SO075025-25C-B	SO075025-31C-B	SO075025-37C-B	SO075025-50C-B	SO075025-50F-B
1/2"	SO075050-25C-B	SO075050-31C-B	SO075050-37C-B	SO075050-50C-B	SO075050-50F-B
3/4"	SO075075-25C-B	SO075075-31C-B	SO075075-37C-B	SO075075-50C-B	SO075075-50F-B
1"	SO075100-25C-B	SO075100-31C-B	SO075100-37C-B	SO075100-50C-B	SO075100-50F-B
1-1/2"	SO075150-25C-B	SO075150-31C-B	SO075150-37C-B	SO075150-50C-B	SO075150-50F-B
2"	SO075200-25C-B	SO075200-31C-B	SO075200-37C-B	SO075200-50C-B	SO075200-50F-B
2-1/2"	SO075250-25C-B	SO075250-31C-B	SO075250-37C-B	SO075250-50C-B	SO075250-50F-B
3"	SO075300-25C-B	SO075300-31C-B	SO075300-37C-B	SO075300-50C-B	SO075300-50F-B
3-1/2"	SO075350-25C-B	SO075350-31C-B	SO075350-37C-B	SO075350-50C-B	SO075350-50F-B
4"	SO075400-25C-B	SO075400-31C-B	SO075400-37C-B	SO075400-50C-B	SO075400-50F-B
5"	SO075500-25C-B	SO075500-31C-B	SO075500-37C-B	SO075500-50C-B	SO075500-50F-B
6"	SO075600-25C-B	SO075600-31C-B	SO075600-37C-B	SO075600-50C-B	SO075600-50F-B
8"	SO075800-25C-B	SO075800-31C-B	SO075800-37C-B	SO075800-50C-B	SO075800-50F-B
10"	SO0751000-25C-B	SO0751000-31C-B	SO0751000-37C-B	SO0751000-50C-B	SO0751000-50F-B

NOTE:- For the Stand-offs with Height longer than 2", the thread depth for barrel is maximum to 1" on each side

**STAND OFF CAP**  
Please See Page #9

**1" (D) Diameter**



Height (H)	Thread (T)				
	1/4NC	5/16NC	3/8NC	1/2NC	1/2NF
1/4"	SO100025-25C-B	SO100025-31C-B	SO100025-37C-B	SO100025-50C-B	SO100025-50F-B
1/2"	SO100050-25C-B	SO100050-31C-B	SO100050-37C-B	SO100050-50C-B	SO100050-50F-B
3/4"	SO100075-25C-B	SO100075-31C-B	SO100075-37C-B	SO100075-50C-B	SO100075-50F-B
1"	SO100100-25C-B	SO100100-31C-B	SO100100-37C-B	SO100100-50C-B	SO100100-50F-B
1-1/2"	SO100150-25C-B	SO100150-31C-B	SO100150-37C-B	SO100150-50C-B	SO100150-50F-B
2"	SO100200-25C-B	SO100200-31C-B	SO100200-37C-B	SO100200-50C-B	SO100200-50F-B
2-1/2"	SO100250-25C-B	SO100250-31C-B	SO100250-37C-B	SO100250-50C-B	SO100250-50F-B
3"	SO100300-25C-B	SO100300-31C-B	SO100300-37C-B	SO100300-50C-B	SO100300-50F-B
3-1/2"	SO100350-25C-B	SO100350-31C-B	SO100350-37C-B	SO100350-50C-B	SO100350-50F-B
4"	SO100400-25C-B	SO100400-31C-B	SO100400-37C-B	SO100400-50C-B	SO100400-50F-B
5"	SO100500-25C-B	SO100500-31C-B	SO100500-37C-B	SO100500-50C-B	SO100500-50F-B
6"	SO100600-25C-B	SO100600-31C-B	SO100600-37C-B	SO100600-50C-B	SO100600-50F-B
8"	SO100800-25C-B	SO100800-31C-B	SO100800-37C-B	SO100800-50C-B	SO100800-50F-B
10"	SO1001000-25C-B	SO1001000-31C-B	SO1001000-37C-B	SO1001000-50C-B	SO1001000-50F-B

**1-1/2" (D) Diameter**

**STAND OFF CAP**  
Please See Page #9

Height (H)	Thread (T)				
	1/4NC	5/16NC	3/8NC	1/2NC	1/2NF
1/4"	SO150025-25C-B	SO150025-31C-B	SO150025-37C-B	SO150025-50C-B	SO150025-50F-B
1/2"	SO150050-25C-B	SO150050-31C-B	SO150050-37C-B	SO150050-50C-B	SO150050-50F-B
3/4"	SO150075-25C-B	SO150075-31C-B	SO150075-37C-B	SO150075-50C-B	SO150075-50F-B
1"	SO150100-25C-B	SO150100-31C-B	SO150100-37C-B	SO150100-50C-B	SO150100-50F-B
1-1/2"	SO150150-25C-B	SO150150-31C-B	SO150150-37C-B	SO150150-50C-B	SO150150-50F-B
2"	SO150200-25C-B	SO150200-31C-B	SO150200-37C-B	SO150200-50C-B	SO150200-50F-B
2-1/2"	SO150250-25C-B	SO150250-31C-B	SO150250-37C-B	SO150250-50C-B	SO150250-50F-B
3"	SO150300-25C-B	SO150300-31C-B	SO150300-37C-B	SO150300-50C-B	SO150300-50F-B
3-1/2"	SO150350-25C-B	SO150350-31C-B	SO150350-37C-B	SO150350-50C-B	SO150350-50F-B
4"	SO150400-25C-B	SO150400-31C-B	SO150400-37C-B	SO150400-50C-B	SO150400-50F-B
5"	SO150500-25C-B	SO150500-31C-B	SO150500-37C-B	SO150500-50C-B	SO150500-50F-B
6"	SO150600-25C-B	SO150600-31C-B	SO150600-37C-B	SO150600-50C-B	SO150600-50F-B
8"	SO150800-25C-B	SO150800-31C-B	SO150800-37C-B	SO150800-50C-B	SO150800-50F-B
10"	SO1501000-25C-B	SO1501000-31C-B	SO1501000-37C-B	SO1501000-50C-B	SO1501000-50F-B

## ▶ 2" (D) Diameter

Height (H)	Thread (T)		
	3/8NC	1/2NC	1/2NF
1/2"	SO200050-37C-B	SO200050-50C-B	SO200050-50F-B
3/4"	SO200075-37C-B	SO200075-50C-B	SO200075-50F-B
1"	SO200100-37C-B	SO200100-50C-B	SO200100-50F-B
1-1/2"	SO200150-37C-B	SO200150-50C-B	SO200150-50F-B
2"	SO200200-37C-B	SO200200-50C-B	SO200200-50F-B
2-1/2"	SO200250-37C-B	SO200250-50C-B	SO200250-50F-B
3"	SO200300-37C-B	SO200300-50C-B	SO200300-50F-B
3-1/2"	SO200350-37C-B	SO200350-50C-B	SO200350-50F-B
4"	SO200400-37C-B	SO200400-50C-B	SO200400-50F-B
5"	SO200500-37C-B	SO200500-50C-B	SO200500-50F-B
6"	SO200600-37C-B	SO200600-50C-B	SO200600-50F-B
8"	SO200800-37C-B	SO200800-50C-B	SO200800-50F-B
10"	SO2001000-37C-B	SO2001000-50C-B	SO2001000-50F-B

**STAND OFF CAP**  
Please See Page #9

## 2-1/2" (D) Diameter ▶

Height (H)	Thread (T)		
	3/8NC	1/2NC	1/2NF
1/2"	SO250050-37C-B	SO250050-50C-B	SO250050-50F-B
3/4"	SO250075-37C-B	SO250075-50C-B	SO250075-50F-B
1"	SO250100-37C-B	SO250100-50C-B	SO250100-50F-B
1-1/2"	SO250150-37C-B	SO250150-50C-B	SO250150-50F-B
2"	SO250200-37C-B	SO250200-50C-B	SO250200-50F-B
2-1/2"	SO250250-37C-B	SO250250-50C-B	SO250250-50F-B
3"	SO250300-37C-B	SO250300-50C-B	SO250300-50F-B
3-1/2"	SO250350-37C-B	SO250350-50C-B	SO250350-50F-B
4"	SO250400-37C-B	SO250400-50C-B	SO250400-50F-B
5"	SO250500-37C-B	SO250500-50C-B	SO250500-50F-B
6"	SO250600-37C-B	SO250600-50C-B	SO250600-50F-B
8"	SO250800-37C-B	SO250800-50C-B	SO250800-50F-B
10"	SO2501000-37C-B	SO2501000-50C-B	SO2501000-50F-B

**STAND OFF CAP**  
Please See Page #9

## 3" (D) Diameter

Height (H)	Thread (T)		
	3/8NC	1/2NC	1/2NF
1/2"	SO300050-37C-B	SO300050-50C-B	SO300050-50F-B
3/4"	SO300075-37C-B	SO300075-50C-B	SO300075-50F-B
1"	SO300100-37C-B	SO300100-50C-B	SO300100-50F-B
1-1/2"	SO300150-37C-B	SO300150-50C-B	SO300150-50F-B
2"	SO300200-37C-B	SO300200-50C-B	SO300200-50F-B
2-1/2"	SO300250-37C-B	SO300250-50C-B	SO300250-50F-B
3"	SO300300-37C-B	SO300300-50C-B	SO300300-50F-B
3-1/2"	SO300350-37C-B	SO300350-50C-B	SO300350-50F-B
4"	SO300400-37C-B	SO300400-50C-B	SO300400-50F-B
5"	SO300500-37C-B	SO300500-50C-B	SO300500-50F-B
6"	SO300600-37C-B	SO300600-50C-B	SO300600-50F-B
8"	SO300800-37C-B	SO300800-50C-B	SO300800-50F-B
10"	SO3001000-37C-B	SO3001000-50C-B	SO3001000-50F-B

**STAND OFF CAP**  
Please See Page #9

## 4" (D) Diameter

Height (H)	Thread (T)		
	3/8NC	1/2NC	1/2NF
1/2"	SO400050-37C-B	SO400050-50C-B	SO400050-50F-B
3/4"	SO400075-37C-B	SO400075-50C-B	SO400075-50F-B
1"	SO400100-37C-B	SO400100-50C-B	SO400100-50F-B
1-1/2"	SO400150-37C-B	SO400150-50C-B	SO400150-50F-B
2"	SO400200-37C-B	SO400200-50C-B	SO400200-50F-B
2-1/2"	SO400250-37C-B	SO400250-50C-B	SO400250-50F-B
3"	SO400300-37C-B	SO400300-50C-B	SO400300-50F-B
3-1/2"	SO400350-37C-B	SO400350-50C-B	SO400350-50F-B
4"	SO400400-37C-B	SO400400-50C-B	SO400400-50F-B
5"	SO400500-37C-B	SO400500-50C-B	SO400500-50F-B
6"	SO400600-37C-B	SO400600-50C-B	SO400600-50F-B
8"	SO400800-37C-B	SO400800-50C-B	SO400800-50F-B
10"	SO4001000-37C-B	SO4001000-50C-B	SO4001000-50F-B

**STAND OFF CAP**  
Please See Page #9

# STAND-OFF CAP

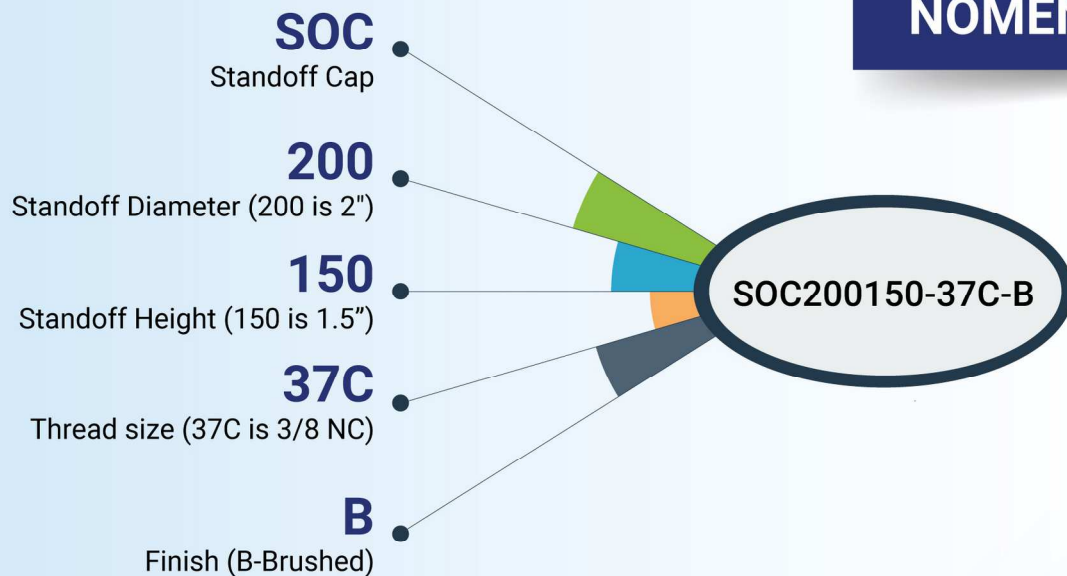
(Integral)



This integral type standoff cap gives a very clean look to the Standoff assembly. They are available in many different sizes to accommodate the variety of standoff.

While selecting the cap makes sure to order the same thread size as the stand off base selection

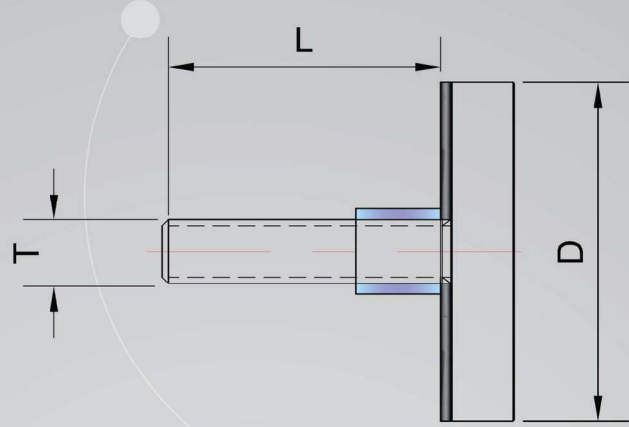
## NOMENCLATURE





## ▶ 1/2" (D) Diameter

Thread Length(L)	Thread (T)
	1/4NC
1/2"	SOC050050-25C
3/4"	SOC050075-25C
1"	SOC050100-25C
1-1/4"	SOC050125-25C
1-1/2"	SOC050150-25C



## 3/4" (D) Diameter ◀

Thread Length(L)	Thread (T)			
	1/4NC	5/16NC	3/8NC	1/2NF
1/2"	SOC075050-25C	SOC075050-31C	SOC075050-37C	SOC075050-50F
3/4"	SOC075075-25C	SOC075075-31C	SOC075075-37C	SOC075075-50F
1"	SOC075100-25C	SOC075100-31C	SOC075100-37C	SOC075100-50F
1-1/4"	SOC075125-25C	SOC075125-31C	SOC075125-37C	SOC075125-50F
1-1/2"	SOC075150-25C	SOC075150-31C	SOC075150-37C	SOC075150-50F

## ▶ 1" (D) Diameter

Thread Length(L)	Thread (T)				
	1/4NC	5/16NC	3/8NC	1/2NC	1/2NF
1/2"	SOC100050-25C	SOC100050-31C	SOC100050-37C	SOC100050-50C	SOC100050-50F
3/4"	SOC100075-25C	SOC100075-31C	SOC100075-37C	SOC100075-50C	SOC100075-50F
1"	SOC100100-25C	SOC100100-31C	SOC100100-37C	SOC100100-50C	SOC100100-50F
1-1/4"	SOC100125-25C	SOC100125-31C	SOC100125-37C	SOC100125-50C	SOC100125-50F
1-1/2"	SOC100150-25C	SOC100150-31C	SOC100150-37C	SOC100150-50C	SOC100150-50F

## 1-1/2" (D) Diameter ◀

Height (H)	Thread (T)				
	1/4NC	5/16NC	3/8NC	1/2NC	1/2NF
1/2"	SOC150050-25C	SOC150050-31C	SOC150050-37C	SOC150050-50C	SOC150050-50F
3/4"	SOC150075-25C	SOC150075-31C	SOC150075-37C	SOC150075-50C	SOC150075-50F
1"	SOC150100-25C	SOC150100-31C	SOC150100-37C	SOC150100-50C	SOC150100-50F
1-1/4"	SOC150125-25C	SOC150125-31C	SOC150125-37C	SOC150125-50C	SOC150125-50F
1-1/2"	SOC150150-25C	SOC150150-31C	SOC150150-37C	SOC150150-50C	SOC150150-50F

## 2" (D) Diameter

Height (H)	Thread (T)		
	3/8NC	1/2NC	1/2NF
3/4"	SOC200075-37C	SOC200075-50C	SOC200075-50F
1"	SOC200100-37C	SOC200100-50C	SOC200100-50F
1-1/4"	SOC200125-37C	SOC200125-50C	SOC200125-50F
1-1/2"	SOC200150-37C	SOC200150-50C	SOC200150-50F

## 2-1/2" (D) Diameter

Height (H)	Thread (T)	
	1/2NC	1/2NF
3/4"	SOC250075-50C	SOC250075-50F
1"	SOC250100-50C	SOC250100-50F
1-1/4"	SOC250125-50C	SOC250125-50F
1-1/2"	SOC250150-50C	SOC250150-50F

## 3" (D) Diameter

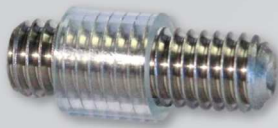
Height (H)	Thread (T)	
	1/2NC	1/2NF
3/4"	SOC300075-50C	SOC300075-50F
1"	SOC300100-50C	SOC300100-50F
1-1/4"	SOC300125-50C	SOC300125-50F
1-1/2"	SOC300150-50C	SOC300150-50F

## 4" (D) Diameter

Height (H)	Thread (T)	
	1/2NC	1/2NF
3/4"	SOC400075-50C	SOC400075-50F
1"	SOC400100-50C	SOC400100-50F
1-1/4"	SOC400125-50C	SOC400125-50F
1-1/2"	SOC400150-50C	SOC400150-50F

The cap includes set screw

Standoff Caps with separate set screws allows flexibility in stand-off assembly by having a choice to select from different length of set screws as per application demands.



## STAND-OFF CAP (SET SCREW DESIGN)

Please see page #14 for **Sleeve**

Please see page #13 for **Gasket**

For **Set Screw** please refer page #13

### ▶ 3/4" (D) Diameter

Thread Length(L)	Thread (T)			
	1/4NC	5/16NC	3/8NC	1/2NF
1/2"	SOC075050-25C-SET	SOC075050-31C-SET	SOC075050-37C-SET	SOC075050-50F-SET
3/4"	SOC075075-25C-SET	SOC075075-31C-SET	SOC075075-37C-SET	SOC075075-50F-SET
1"	SOC075100-25C-SET	SOC075100-31C-SET	SOC075100-37C-SET	SOC075100-50F-SET
1-1/4"	SOC075125-25C-SET	SOC075125-31C-SET	SOC075125-37C-SET	SOC075125-50F-SET
1-1/2"	SOC075150-25C-SET	SOC075150-31C-SET	SOC075150-37C-SET	SOC075150-50F-SET

### 1" (D) Diameter ◀

Thread Length(L)	Thread (T)				
	1/4NC	5/16NC	3/8NC	1/2NC	1/2NF
1/2"	SOC100050-25C-SET	SOC100050-31C-SET	SOC100050-37C-SET	SOC100050-50C-SET	SOC100050-50F-SET
3/4"	SOC100075-25C-SET	SOC100075-31C-SET	SOC100075-37C-SET	SOC100075-50C-SET	SOC100075-50F-SET
1"	SOC100100-25C-SET	SOC100100-31C-SET	SOC100100-37C-SET	SOC100100-50C-SET	SOC100100-50F-SET
1-1/4"	SOC100125-25C-SET	SOC100125-31C-SET	SOC100125-37C-SET	SOC100125-50C-SET	SOC100125-50F-SET
1-1/2"	SOC100150-25C-SET	SOC100150-31C-SET	SOC100150-37C-SET	SOC100150-50C-SET	SOC100150-50F-SET

### ▶ 1-1/2" (D) Diameter

Height (H)	Thread (T)				
	1/4NC	5/16NC	3/8NC	1/2NC	1/2NF
1/2"	SOC150050-25C-SET	SOC150050-31C-SET	SOC150050-37C-SET	SOC150050-50C-SET	SOC150050-50F-SET
3/4"	SOC150075-25C-SET	SOC150075-31C-SET	SOC150075-37C-SET	SOC150075-50C-SET	SOC150075-50F-SET
1"	SOC150100-25C-SET	SOC150100-31C-SET	SOC150100-37C-SET	SOC150100-50C-SET	SOC150100-50F-SET
1-1/4"	SOC150125-25C-SET	SOC150125-31C-SET	SOC150125-37C-SET	SOC150125-50C-SET	SOC150125-50F-SET
1-1/2"	SOC150150-25C-SET	SOC150150-31C-SET	SOC150150-37C-SET	SOC150150-50C-SET	SOC150150-50F-SET

## ▶ 2" (D) Diameter

Height (H)	Thread (T)		
	3/8NC	1/2NC	1/2NF
3/4"	SOC200075-37C-SET	SOC200075-50C-SET	SOC200075-50F-SET
1"	SOC200100-37C-SET	SOC200100-50C-SET	SOC200100-50F-SET
1-1/4"	SOC200125-37C-SET	SOC200125-50C-SET	SOC200125-50F-SET
1-1/2"	SOC200150-37C-SET	SOC200150-50C-SET	SOC200150-50F-SET

## 2-1/2" (D) Diameter ◀

Height (H)	Thread (T)	
	1/2NC	1/2NF
3/4"	SOC250075-50C-SET	SOC250075-50F-SET
1"	SOC250100-50C-SET	SOC250100-50F-SET
1-1/4"	SOC250125-50C-SET	SOC250125-50F-SET
1-1/2"	SOC250150-50C-SET	SOC250150-50F-SET

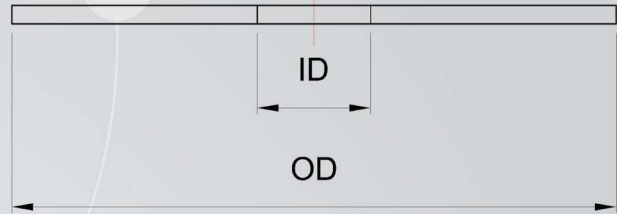
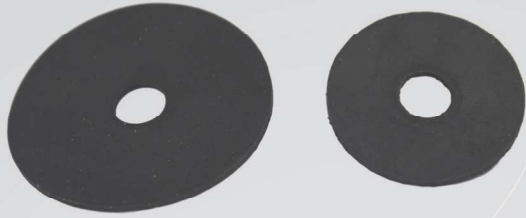
## ▶ 3" (D) Diameter

Height (H)	Thread (T)	
	1/2NC	1/2NF
3/4"	SOC300075-50C-SET	SOC300075-50F-SET
1"	SOC300100-50C-SET	SOC300100-50F-SET
1-1/4"	SOC300125-50C-SET	SOC300125-50F-SET
1-1/2"	SOC300150-50C-SET	SOC300150-50F-SET

## 4" (D) Diameter ◀

Height (H)	Thread (T)	
	1/2NC	1/2NF
3/4"	SOC400075-50C-SET	SOC400075-50F-SET
1"	SOC400100-50C-SET	SOC400100-50F-SET
1-1/4"	SOC400125-50C-SET	SOC400125-50F-SET
1-1/2"	SOC400150-50C-SET	SOC400150-50F-SET

## GASKET



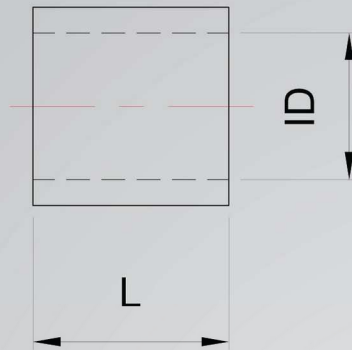
OD	ID			
	1/4"	5/16"	3/8"	1/2"
1/2"	G050025	G050031	G050037	G050050
3/4"	G075025	G075031	G075037	G075050
1"	G100025	G100031	G100037	G100050
1-1/2"	G150025	G150031	G150037	G150050
2"	G200025	G200031	G200037	G200050
2-1/2"	G250025	G250031	G250037	G250050
3"	G300025	G300031	G300037	G300050

## STAINLESS STEEL SET SCREW



Length	Thread (T)				
	1/4NC	5/16NC	3/8NC	1/2NC	1/2NF
1/4"	SET025-25C	SET025-31C	SET025-37C	SET025-50C	SET025-50F
1/2"	SET050-25C	SET050-31C	SET050-37C	SET050-50C	SET050-50F
3/4"	SET075-25C	SET075-31C	SET075-37C	SET075-50C	SET075-50F
1"	SET100-25C	SET100-31C	SET100-37C	SET100-50C	SET100-50F
1-1/2"	SET150-25C	SET150-31C	SET150-37C	SET150-50C	SET150-50F
2"	SET200-25C	SET200-31C	SET200-37C	SET200-50C	SET200-50F
2-1/2"	SET250-25C	SET250-31C	SET250-37C	SET250-50C	SET250-50F
3"	SET300-25C	SET300-31C	SET300-37C	SET300-50C	SET300-50F
3-1/2"	SET350-25C	SET350-31C	SET350-37C	SET350-50C	SET350-50F
4"	SET400-25C	SET400-31C	SET400-37C	SET400-50C	SET400-50F

## SLEEVES



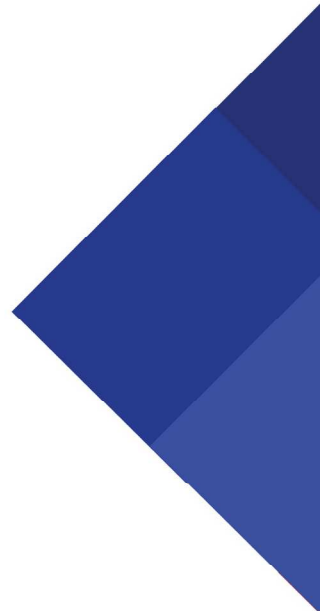
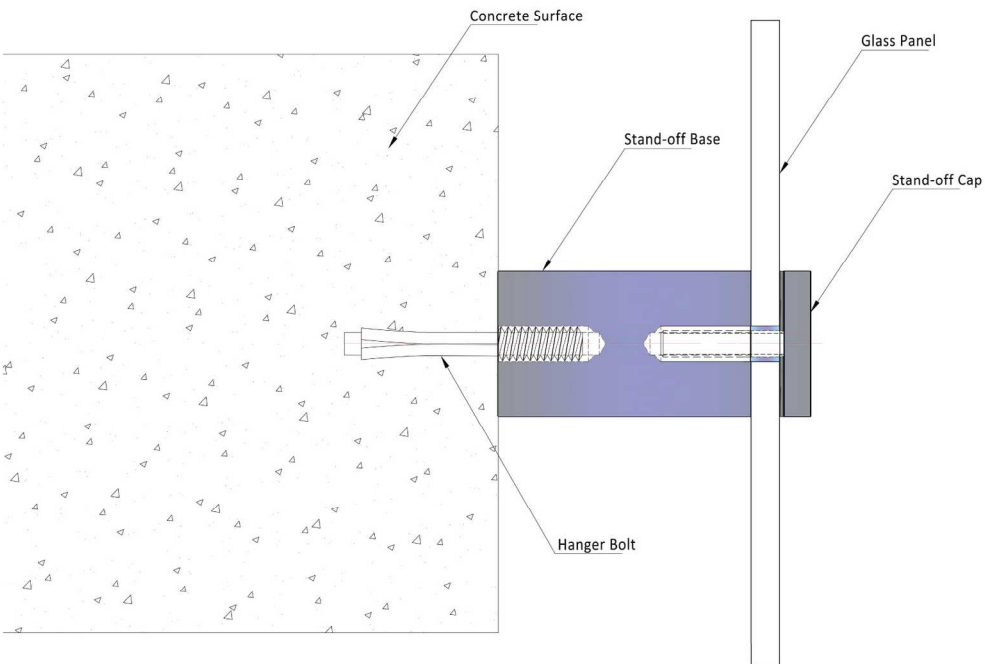
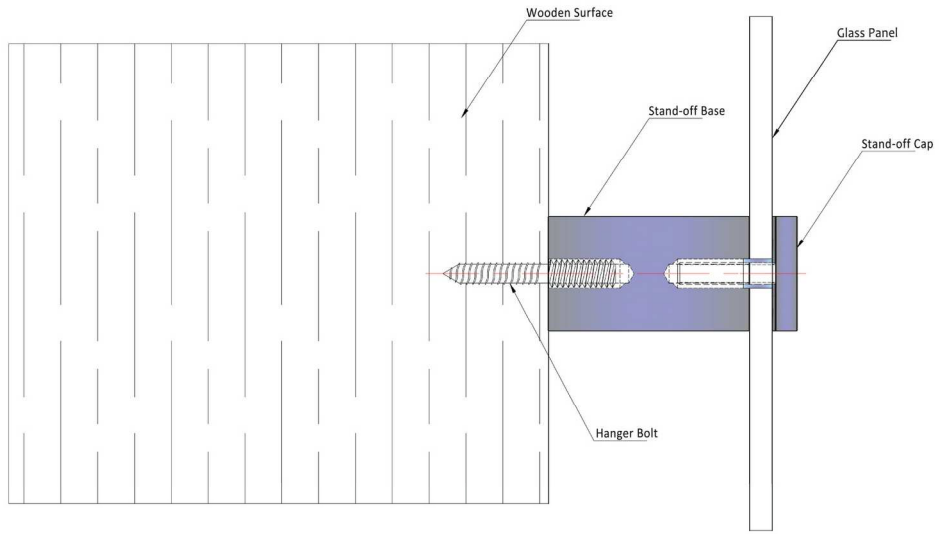
Length	ID			
	1/4"	5/16"	3/8"	1/2"
1/4"	SL025025	SL025031	SL025037	SL025050
1/2"	SL050025	SL050031	SL050037	SL050050
3/4"	SL075025	SL075031	SL075037	SL075050
1"	SL100025	SL100031	SL100037	SL100050

## STEEL HANGER BOLTS

OAL	Machined Thread			
	1/4NC	5/16NC	3/8NC	1/2NC
2"	HBS200-25C	HBS200-31C	-	-
2-1/2"	HBS250-25C	HBS250-31C	-	-
3"	HBS300-25C	HBS300-31C	HBS300-37C	HBS300-50C
3-1/2"	HBS350-25C	HBS350-31C	HBS350-37C	HBS350-50C
4"	HBS400-25C	HBS400-31C	HBS400-37C	HBS400-50C
5"	HBS500-25C	-	HBS500-37C	HBS500-50C
6"	HBS600-25C	-	HBS600-37C	HBS600-50C



\* Stainless Steel hanger Bolts are available upon request.







## LITERATURE DISCLAIMER

The information contained on the Literature is for general information only and is correct to the best of our knowledge at time of preparation.

The information provided is in form of recommendations only. Any advisory recommendations given in our publications must be modified to conform to local codes, conditions and specifications. Please consult a licensed engineer before installation to ensure your installation meets the local building codes.

We reserve all rights to amend any information published in our literature without additional notice. EMW Stainless cannot be held responsible or liable for the selection nor application of our products.

 235 41 Avenue NE, Calgary AB T2E 2N4

 403 919 5271

587 353 1150



[sales@emwstainless.com](mailto:sales@emwstainless.com)  
[sandeep@emwstainless.com](mailto:sandeep@emwstainless.com)



[www.emwstainless.com](http://www.emwstainless.com)