





www.emwstainless.com

 235 41 Avenue NE, Calgary AB T2E 2N4

 403 919 5271

 587 353 1150

 sales@emwstainless.com
sandeep@emwstainless.com



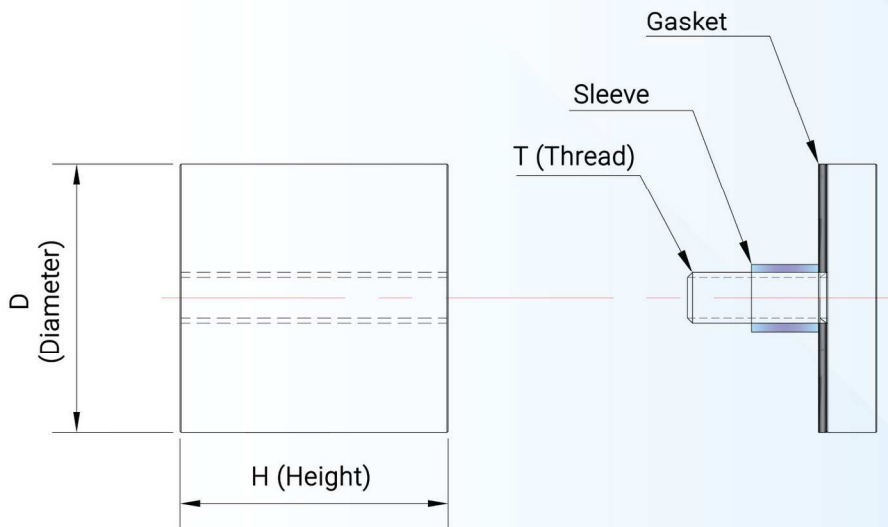
STAINLESS STEEL STAND OFF **FOR GLASS PANELS**

Stand-offs are a clean and simple way to support point supported Glass Panels and are truly the perfect compliment for Architectural Design.

These Stand-offs are ideal for applications include frame-less guardrail systems, glass Display panels mounted to walls or signage panels and Decorative applications and can be mounted on wood, steel, concrete, or HSS profiles.

We manufacture all our standoffs at our shop based in Calgary. Our Stand-offs delivers the best Quality in the market with an unbeatable consistency.

We can manufacture stand-off with custom designs, Please call or Email us with specifications.



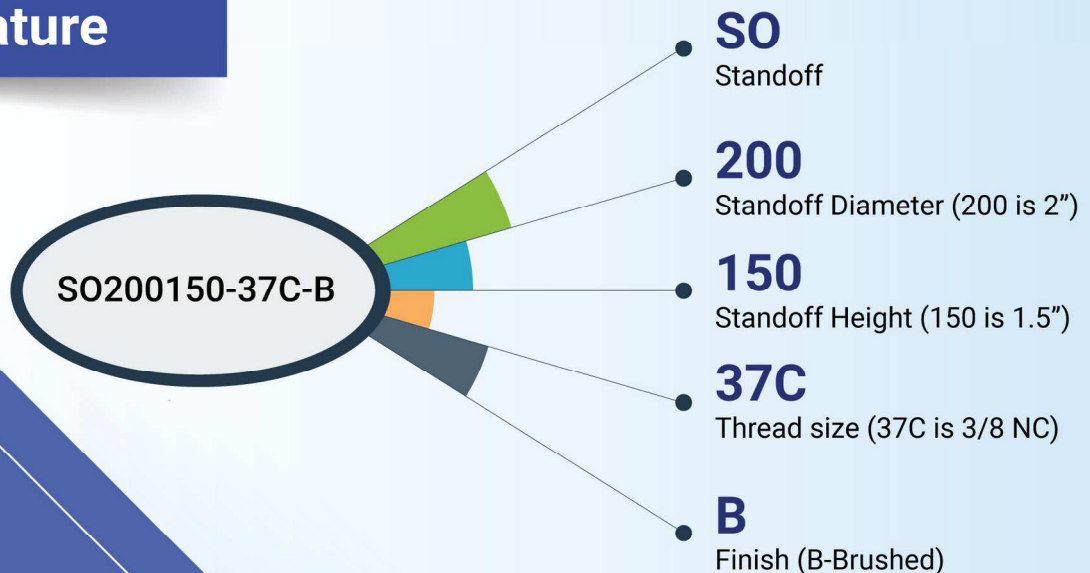
STAND-OFF SYSTEM



A stand-off assembly is usually consists of Standoff base and Cap. EMW Stainless steel has wide range of stand-off assemblies to choose from.

EMW stainless makes Standoff from Diameter ½" to 4" and from length ½" to 10"

Stand Off Base Nomenclature



STAND OFF BASE

1/2" Diameter standoff are ideal for light duty glass displays or signage. Mirror Finished standoff can be available upon request

NOTE

For the Stand-offs with Height longer than 2", the thread depth for barrel is maximum to 1" on each side.

Ex. Standoff SO050500 will have 1 inch thread depth on each side.

1/2" (D) Diameter

| Height (H) | Thread (T) |
|------------|----------------|
| | 1/4NC |
| 1/4" | SO050025-25C-B |
| 1/2" | SO050050-25C-B |
| 3/4" | SO050075-25C-B |
| 1" | SO050100-25C-B |
| 1-1/2" | SO050150-25C-B |
| 2" | SO050200-25C-B |
| 2-1/2" | SO050250-25C-B |
| 3" | SO050300-25C-B |
| 3-1/2" | SO050350-25C-B |
| 4" | SO050400-25C-B |
| 5" | SO050500-25C-B |
| 6" | SO050600-25C-B |

STAND OFF CAP
Please See Page #9

3/4" (D) Diameter

STAND OFF CAP
Please See Page #9

| Height (H) | Thread (T) | | | | |
|------------|-----------------|-----------------|-----------------|-----------------|-----------------|
| | 1/4NC | 5/16NC | 3/8NC | 1/2NC | 1/2NF |
| 1/4" | SO075025-25C-B | SO075025-31C-B | SO075025-37C-B | SO075025-50C-B | SO075025-50F-B |
| 1/2" | SO075050-25C-B | SO075050-31C-B | SO075050-37C-B | SO075050-50C-B | SO075050-50F-B |
| 3/4" | SO075075-25C-B | SO075075-31C-B | SO075075-37C-B | SO075075-50C-B | SO075075-50F-B |
| 1" | SO075100-25C-B | SO075100-31C-B | SO075100-37C-B | SO075100-50C-B | SO075100-50F-B |
| 1-1/2" | SO075150-25C-B | SO075150-31C-B | SO075150-37C-B | SO075150-50C-B | SO075150-50F-B |
| 2" | SO075200-25C-B | SO075200-31C-B | SO075200-37C-B | SO075200-50C-B | SO075200-50F-B |
| 2-1/2" | SO075250-25C-B | SO075250-31C-B | SO075250-37C-B | SO075250-50C-B | SO075250-50F-B |
| 3" | SO075300-25C-B | SO075300-31C-B | SO075300-37C-B | SO075300-50C-B | SO075300-50F-B |
| 3-1/2" | SO075350-25C-B | SO075350-31C-B | SO075350-37C-B | SO075350-50C-B | SO075350-50F-B |
| 4" | SO075400-25C-B | SO075400-31C-B | SO075400-37C-B | SO075400-50C-B | SO075400-50F-B |
| 5" | SO075500-25C-B | SO075500-31C-B | SO075500-37C-B | SO075500-50C-B | SO075500-50F-B |
| 6" | SO075600-25C-B | SO075600-31C-B | SO075600-37C-B | SO075600-50C-B | SO075600-50F-B |
| 8" | SO075800-25C-B | SO075800-31C-B | SO075800-37C-B | SO075800-50C-B | SO075800-50F-B |
| 10" | SO0751000-25C-B | SO0751000-31C-B | SO0751000-37C-B | SO0751000-50C-B | SO0751000-50F-B |

NOTE:- For the Stand-offs with Height longer than 2", the thread depth for barrel is maximum to 1" on each side

STAND OFF CAP
Please See Page #9

1" (D) Diameter



| Height (H) | Thread (T) | | | | |
|------------|-----------------|-----------------|-----------------|-----------------|-----------------|
| | 1/4NC | 5/16NC | 3/8NC | 1/2NC | 1/2NF |
| 1/4" | SO100025-25C-B | SO100025-31C-B | SO100025-37C-B | SO100025-50C-B | SO100025-50F-B |
| 1/2" | SO100050-25C-B | SO100050-31C-B | SO100050-37C-B | SO100050-50C-B | SO100050-50F-B |
| 3/4" | SO100075-25C-B | SO100075-31C-B | SO100075-37C-B | SO100075-50C-B | SO100075-50F-B |
| 1" | SO100100-25C-B | SO100100-31C-B | SO100100-37C-B | SO100100-50C-B | SO100100-50F-B |
| 1-1/2" | SO100150-25C-B | SO100150-31C-B | SO100150-37C-B | SO100150-50C-B | SO100150-50F-B |
| 2" | SO100200-25C-B | SO100200-31C-B | SO100200-37C-B | SO100200-50C-B | SO100200-50F-B |
| 2-1/2" | SO100250-25C-B | SO100250-31C-B | SO100250-37C-B | SO100250-50C-B | SO100250-50F-B |
| 3" | SO100300-25C-B | SO100300-31C-B | SO100300-37C-B | SO100300-50C-B | SO100300-50F-B |
| 3-1/2" | SO100350-25C-B | SO100350-31C-B | SO100350-37C-B | SO100350-50C-B | SO100350-50F-B |
| 4" | SO100400-25C-B | SO100400-31C-B | SO100400-37C-B | SO100400-50C-B | SO100400-50F-B |
| 5" | SO100500-25C-B | SO100500-31C-B | SO100500-37C-B | SO100500-50C-B | SO100500-50F-B |
| 6" | SO100600-25C-B | SO100600-31C-B | SO100600-37C-B | SO100600-50C-B | SO100600-50F-B |
| 8" | SO100800-25C-B | SO100800-31C-B | SO100800-37C-B | SO100800-50C-B | SO100800-50F-B |
| 10" | SO1001000-25C-B | SO1001000-31C-B | SO1001000-37C-B | SO1001000-50C-B | SO1001000-50F-B |

1-1/2" (D) Diameter

STAND OFF CAP
Please See Page #9

| Height (H) | Thread (T) | | | | |
|------------|-----------------|-----------------|-----------------|-----------------|-----------------|
| | 1/4NC | 5/16NC | 3/8NC | 1/2NC | 1/2NF |
| 1/4" | SO150025-25C-B | SO150025-31C-B | SO150025-37C-B | SO150025-50C-B | SO150025-50F-B |
| 1/2" | SO150050-25C-B | SO150050-31C-B | SO150050-37C-B | SO150050-50C-B | SO150050-50F-B |
| 3/4" | SO150075-25C-B | SO150075-31C-B | SO150075-37C-B | SO150075-50C-B | SO150075-50F-B |
| 1" | SO150100-25C-B | SO150100-31C-B | SO150100-37C-B | SO150100-50C-B | SO150100-50F-B |
| 1-1/2" | SO150150-25C-B | SO150150-31C-B | SO150150-37C-B | SO150150-50C-B | SO150150-50F-B |
| 2" | SO150200-25C-B | SO150200-31C-B | SO150200-37C-B | SO150200-50C-B | SO150200-50F-B |
| 2-1/2" | SO150250-25C-B | SO150250-31C-B | SO150250-37C-B | SO150250-50C-B | SO150250-50F-B |
| 3" | SO150300-25C-B | SO150300-31C-B | SO150300-37C-B | SO150300-50C-B | SO150300-50F-B |
| 3-1/2" | SO150350-25C-B | SO150350-31C-B | SO150350-37C-B | SO150350-50C-B | SO150350-50F-B |
| 4" | SO150400-25C-B | SO150400-31C-B | SO150400-37C-B | SO150400-50C-B | SO150400-50F-B |
| 5" | SO150500-25C-B | SO150500-31C-B | SO150500-37C-B | SO150500-50C-B | SO150500-50F-B |
| 6" | SO150600-25C-B | SO150600-31C-B | SO150600-37C-B | SO150600-50C-B | SO150600-50F-B |
| 8" | SO150800-25C-B | SO150800-31C-B | SO150800-37C-B | SO150800-50C-B | SO150800-50F-B |
| 10" | SO1501000-25C-B | SO1501000-31C-B | SO1501000-37C-B | SO1501000-50C-B | SO1501000-50F-B |

▶ 2" (D) Diameter

| Height (H) | Thread (T) | | |
|------------|-----------------|-----------------|-----------------|
| | 3/8NC | 1/2NC | 1/2NF |
| 1/2" | SO200050-37C-B | SO200050-50C-B | SO200050-50F-B |
| 3/4" | SO200075-37C-B | SO200075-50C-B | SO200075-50F-B |
| 1" | SO200100-37C-B | SO200100-50C-B | SO200100-50F-B |
| 1-1/2" | SO200150-37C-B | SO200150-50C-B | SO200150-50F-B |
| 2" | SO200200-37C-B | SO200200-50C-B | SO200200-50F-B |
| 2-1/2" | SO200250-37C-B | SO200250-50C-B | SO200250-50F-B |
| 3" | SO200300-37C-B | SO200300-50C-B | SO200300-50F-B |
| 3-1/2" | SO200350-37C-B | SO200350-50C-B | SO200350-50F-B |
| 4" | SO200400-37C-B | SO200400-50C-B | SO200400-50F-B |
| 5" | SO200500-37C-B | SO200500-50C-B | SO200500-50F-B |
| 6" | SO200600-37C-B | SO200600-50C-B | SO200600-50F-B |
| 8" | SO200800-37C-B | SO200800-50C-B | SO200800-50F-B |
| 10" | SO2001000-37C-B | SO2001000-50C-B | SO2001000-50F-B |

STAND OFF CAP
Please See Page #9

2-1/2" (D) Diameter ▶

| Height (H) | Thread (T) | | |
|------------|-----------------|-----------------|-----------------|
| | 3/8NC | 1/2NC | 1/2NF |
| 1/2" | SO250050-37C-B | SO250050-50C-B | SO250050-50F-B |
| 3/4" | SO250075-37C-B | SO250075-50C-B | SO250075-50F-B |
| 1" | SO250100-37C-B | SO250100-50C-B | SO250100-50F-B |
| 1-1/2" | SO250150-37C-B | SO250150-50C-B | SO250150-50F-B |
| 2" | SO250200-37C-B | SO250200-50C-B | SO250200-50F-B |
| 2-1/2" | SO250250-37C-B | SO250250-50C-B | SO250250-50F-B |
| 3" | SO250300-37C-B | SO250300-50C-B | SO250300-50F-B |
| 3-1/2" | SO250350-37C-B | SO250350-50C-B | SO250350-50F-B |
| 4" | SO250400-37C-B | SO250400-50C-B | SO250400-50F-B |
| 5" | SO250500-37C-B | SO250500-50C-B | SO250500-50F-B |
| 6" | SO250600-37C-B | SO250600-50C-B | SO250600-50F-B |
| 8" | SO250800-37C-B | SO250800-50C-B | SO250800-50F-B |
| 10" | SO2501000-37C-B | SO2501000-50C-B | SO2501000-50F-B |

STAND OFF CAP
Please See Page #9

3" (D) Diameter

| Height (H) | Thread (T) | | |
|------------|-----------------|-----------------|-----------------|
| | 3/8NC | 1/2NC | 1/2NF |
| 1/2" | SO300050-37C-B | SO300050-50C-B | SO300050-50F-B |
| 3/4" | SO300075-37C-B | SO300075-50C-B | SO300075-50F-B |
| 1" | SO300100-37C-B | SO300100-50C-B | SO300100-50F-B |
| 1-1/2" | SO300150-37C-B | SO300150-50C-B | SO300150-50F-B |
| 2" | SO300200-37C-B | SO300200-50C-B | SO300200-50F-B |
| 2-1/2" | SO300250-37C-B | SO300250-50C-B | SO300250-50F-B |
| 3" | SO300300-37C-B | SO300300-50C-B | SO300300-50F-B |
| 3-1/2" | SO300350-37C-B | SO300350-50C-B | SO300350-50F-B |
| 4" | SO300400-37C-B | SO300400-50C-B | SO300400-50F-B |
| 5" | SO300500-37C-B | SO300500-50C-B | SO300500-50F-B |
| 6" | SO300600-37C-B | SO300600-50C-B | SO300600-50F-B |
| 8" | SO300800-37C-B | SO300800-50C-B | SO300800-50F-B |
| 10" | SO3001000-37C-B | SO3001000-50C-B | SO3001000-50F-B |

STAND OFF CAP
Please See Page #9

4" (D) Diameter

| Height (H) | Thread (T) | | |
|------------|-----------------|-----------------|-----------------|
| | 3/8NC | 1/2NC | 1/2NF |
| 1/2" | SO400050-37C-B | SO400050-50C-B | SO400050-50F-B |
| 3/4" | SO400075-37C-B | SO400075-50C-B | SO400075-50F-B |
| 1" | SO400100-37C-B | SO400100-50C-B | SO400100-50F-B |
| 1-1/2" | SO400150-37C-B | SO400150-50C-B | SO400150-50F-B |
| 2" | SO400200-37C-B | SO400200-50C-B | SO400200-50F-B |
| 2-1/2" | SO400250-37C-B | SO400250-50C-B | SO400250-50F-B |
| 3" | SO400300-37C-B | SO400300-50C-B | SO400300-50F-B |
| 3-1/2" | SO400350-37C-B | SO400350-50C-B | SO400350-50F-B |
| 4" | SO400400-37C-B | SO400400-50C-B | SO400400-50F-B |
| 5" | SO400500-37C-B | SO400500-50C-B | SO400500-50F-B |
| 6" | SO400600-37C-B | SO400600-50C-B | SO400600-50F-B |
| 8" | SO400800-37C-B | SO400800-50C-B | SO400800-50F-B |
| 10" | SO4001000-37C-B | SO4001000-50C-B | SO4001000-50F-B |

STAND OFF CAP
Please See Page #9

STAND-OFF CAP

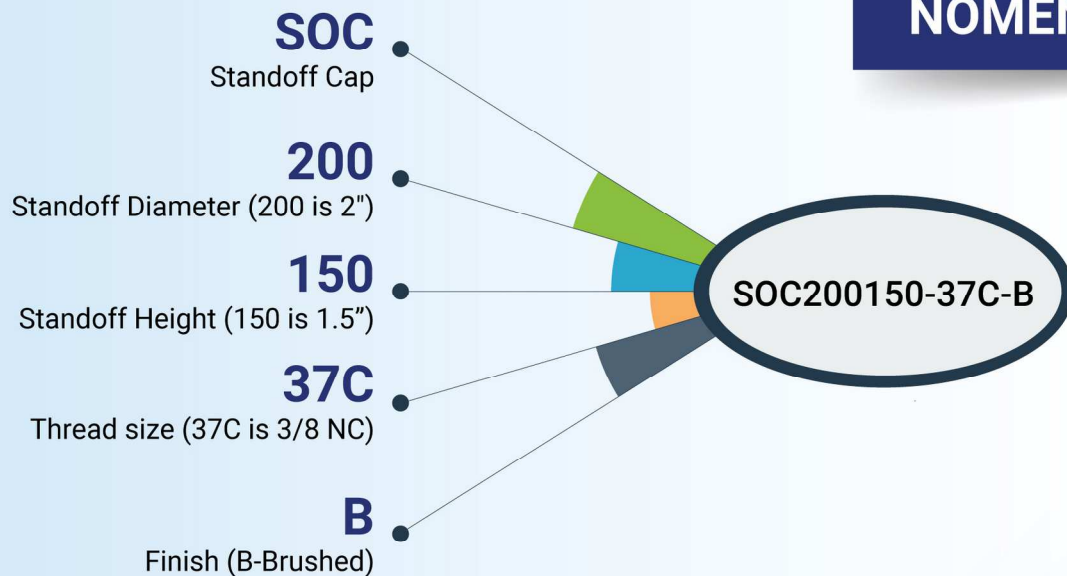
(Integral)



This integral type standoff cap gives a very clean look to the Standoff assembly. They are available in many different sizes to accommodate the variety of standoff.

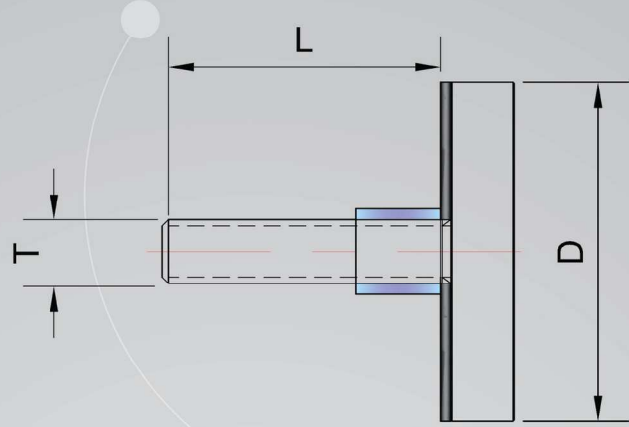
While selecting the cap makes sure to order the same thread size as the stand off base selection

NOMENCLATURE



▶ 1/2" (D) Diameter

| Thread Length(L) | Thread (T) |
|------------------|---------------|
| | 1/4NC |
| 1/2" | SOC050050-25C |
| 3/4" | SOC050075-25C |
| 1" | SOC050100-25C |
| 1-1/4" | SOC050125-25C |
| 1-1/2" | SOC050150-25C |



3/4" (D) Diameter ◀

| Thread Length(L) | Thread (T) | | | |
|------------------|---------------|---------------|---------------|---------------|
| | 1/4NC | 5/16NC | 3/8NC | 1/2NF |
| 1/2" | SOC075050-25C | SOC075050-31C | SOC075050-37C | SOC075050-50F |
| 3/4" | SOC075075-25C | SOC075075-31C | SOC075075-37C | SOC075075-50F |
| 1" | SOC075100-25C | SOC075100-31C | SOC075100-37C | SOC075100-50F |
| 1-1/4" | SOC075125-25C | SOC075125-31C | SOC075125-37C | SOC075125-50F |
| 1-1/2" | SOC075150-25C | SOC075150-31C | SOC075150-37C | SOC075150-50F |

▶ 1" (D) Diameter

| Thread Length(L) | Thread (T) | | | | |
|------------------|---------------|---------------|---------------|---------------|---------------|
| | 1/4NC | 5/16NC | 3/8NC | 1/2NC | 1/2NF |
| 1/2" | SOC100050-25C | SOC100050-31C | SOC100050-37C | SOC100050-50C | SOC100050-50F |
| 3/4" | SOC100075-25C | SOC100075-31C | SOC100075-37C | SOC100075-50C | SOC100075-50F |
| 1" | SOC100100-25C | SOC100100-31C | SOC100100-37C | SOC100100-50C | SOC100100-50F |
| 1-1/4" | SOC100125-25C | SOC100125-31C | SOC100125-37C | SOC100125-50C | SOC100125-50F |
| 1-1/2" | SOC100150-25C | SOC100150-31C | SOC100150-37C | SOC100150-50C | SOC100150-50F |

1-1/2" (D) Diameter ◀

| Height (H) | Thread (T) | | | | |
|------------|---------------|---------------|---------------|---------------|---------------|
| | 1/4NC | 5/16NC | 3/8NC | 1/2NC | 1/2NF |
| 1/2" | SOC150050-25C | SOC150050-31C | SOC150050-37C | SOC150050-50C | SOC150050-50F |
| 3/4" | SOC150075-25C | SOC150075-31C | SOC150075-37C | SOC150075-50C | SOC150075-50F |
| 1" | SOC150100-25C | SOC150100-31C | SOC150100-37C | SOC150100-50C | SOC150100-50F |
| 1-1/4" | SOC150125-25C | SOC150125-31C | SOC150125-37C | SOC150125-50C | SOC150125-50F |
| 1-1/2" | SOC150150-25C | SOC150150-31C | SOC150150-37C | SOC150150-50C | SOC150150-50F |

2" (D) Diameter

| Height (H) | Thread (T) | | |
|------------|---------------|---------------|---------------|
| | 3/8NC | 1/2NC | 1/2NF |
| 3/4" | SOC200075-37C | SOC200075-50C | SOC200075-50F |
| 1" | SOC200100-37C | SOC200100-50C | SOC200100-50F |
| 1-1/4" | SOC200125-37C | SOC200125-50C | SOC200125-50F |
| 1-1/2" | SOC200150-37C | SOC200150-50C | SOC200150-50F |

2-1/2" (D) Diameter

| Height (H) | Thread (T) | |
|------------|---------------|---------------|
| | 1/2NC | 1/2NF |
| 3/4" | SOC250075-50C | SOC250075-50F |
| 1" | SOC250100-50C | SOC250100-50F |
| 1-1/4" | SOC250125-50C | SOC250125-50F |
| 1-1/2" | SOC250150-50C | SOC250150-50F |

3" (D) Diameter

| Height (H) | Thread (T) | |
|------------|---------------|---------------|
| | 1/2NC | 1/2NF |
| 3/4" | SOC300075-50C | SOC300075-50F |
| 1" | SOC300100-50C | SOC300100-50F |
| 1-1/4" | SOC300125-50C | SOC300125-50F |
| 1-1/2" | SOC300150-50C | SOC300150-50F |

4" (D) Diameter

| Height (H) | Thread (T) | |
|------------|---------------|---------------|
| | 1/2NC | 1/2NF |
| 3/4" | SOC400075-50C | SOC400075-50F |
| 1" | SOC400100-50C | SOC400100-50F |
| 1-1/4" | SOC400125-50C | SOC400125-50F |
| 1-1/2" | SOC400150-50C | SOC400150-50F |

The cap includes set screw

Standoff Caps with separate set screws allows flexibility in stand-off assembly by having a choice to select from different length of set screws as per application demands.



STAND-OFF CAP (SET SCREW DESIGN)

Please see page #14 for **Sleeve**

Please see page #13 for **Gasket**

For **Set Screw** please refer page #13

▶ 3/4" (D) Diameter

| Thread Length(L) | Thread (T) | | | |
|------------------|-------------------|-------------------|-------------------|-------------------|
| | 1/4NC | 5/16NC | 3/8NC | 1/2NF |
| 1/2" | SOC075050-25C-SET | SOC075050-31C-SET | SOC075050-37C-SET | SOC075050-50F-SET |
| 3/4" | SOC075075-25C-SET | SOC075075-31C-SET | SOC075075-37C-SET | SOC075075-50F-SET |
| 1" | SOC075100-25C-SET | SOC075100-31C-SET | SOC075100-37C-SET | SOC075100-50F-SET |
| 1-1/4" | SOC075125-25C-SET | SOC075125-31C-SET | SOC075125-37C-SET | SOC075125-50F-SET |
| 1-1/2" | SOC075150-25C-SET | SOC075150-31C-SET | SOC075150-37C-SET | SOC075150-50F-SET |

1" (D) Diameter ◀

| Thread Length(L) | Thread (T) | | | | |
|------------------|-------------------|-------------------|-------------------|-------------------|-------------------|
| | 1/4NC | 5/16NC | 3/8NC | 1/2NC | 1/2NF |
| 1/2" | SOC100050-25C-SET | SOC100050-31C-SET | SOC100050-37C-SET | SOC100050-50C-SET | SOC100050-50F-SET |
| 3/4" | SOC100075-25C-SET | SOC100075-31C-SET | SOC100075-37C-SET | SOC100075-50C-SET | SOC100075-50F-SET |
| 1" | SOC100100-25C-SET | SOC100100-31C-SET | SOC100100-37C-SET | SOC100100-50C-SET | SOC100100-50F-SET |
| 1-1/4" | SOC100125-25C-SET | SOC100125-31C-SET | SOC100125-37C-SET | SOC100125-50C-SET | SOC100125-50F-SET |
| 1-1/2" | SOC100150-25C-SET | SOC100150-31C-SET | SOC100150-37C-SET | SOC100150-50C-SET | SOC100150-50F-SET |

▶ 1-1/2" (D) Diameter

| Height (H) | Thread (T) | | | | |
|------------|-------------------|-------------------|-------------------|-------------------|-------------------|
| | 1/4NC | 5/16NC | 3/8NC | 1/2NC | 1/2NF |
| 1/2" | SOC150050-25C-SET | SOC150050-31C-SET | SOC150050-37C-SET | SOC150050-50C-SET | SOC150050-50F-SET |
| 3/4" | SOC150075-25C-SET | SOC150075-31C-SET | SOC150075-37C-SET | SOC150075-50C-SET | SOC150075-50F-SET |
| 1" | SOC150100-25C-SET | SOC150100-31C-SET | SOC150100-37C-SET | SOC150100-50C-SET | SOC150100-50F-SET |
| 1-1/4" | SOC150125-25C-SET | SOC150125-31C-SET | SOC150125-37C-SET | SOC150125-50C-SET | SOC150125-50F-SET |
| 1-1/2" | SOC150150-25C-SET | SOC150150-31C-SET | SOC150150-37C-SET | SOC150150-50C-SET | SOC150150-50F-SET |

▶ 2" (D) Diameter

| Height (H) | Thread (T) | | |
|------------|-------------------|-------------------|-------------------|
| | 3/8NC | 1/2NC | 1/2NF |
| 3/4" | SOC200075-37C-SET | SOC200075-50C-SET | SOC200075-50F-SET |
| 1" | SOC200100-37C-SET | SOC200100-50C-SET | SOC200100-50F-SET |
| 1-1/4" | SOC200125-37C-SET | SOC200125-50C-SET | SOC200125-50F-SET |
| 1-1/2" | SOC200150-37C-SET | SOC200150-50C-SET | SOC200150-50F-SET |

2-1/2" (D) Diameter ◀

| Height (H) | Thread (T) | |
|------------|-------------------|-------------------|
| | 1/2NC | 1/2NF |
| 3/4" | SOC250075-50C-SET | SOC250075-50F-SET |
| 1" | SOC250100-50C-SET | SOC250100-50F-SET |
| 1-1/4" | SOC250125-50C-SET | SOC250125-50F-SET |
| 1-1/2" | SOC250150-50C-SET | SOC250150-50F-SET |

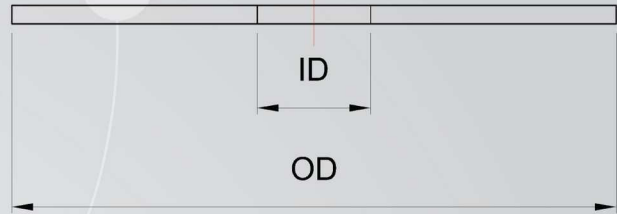
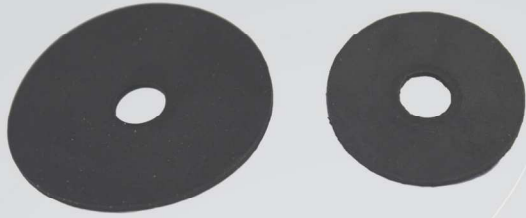
▶ 3" (D) Diameter

| Height (H) | Thread (T) | |
|------------|-------------------|-------------------|
| | 1/2NC | 1/2NF |
| 3/4" | SOC300075-50C-SET | SOC300075-50F-SET |
| 1" | SOC300100-50C-SET | SOC300100-50F-SET |
| 1-1/4" | SOC300125-50C-SET | SOC300125-50F-SET |
| 1-1/2" | SOC300150-50C-SET | SOC300150-50F-SET |

4" (D) Diameter ◀

| Height (H) | Thread (T) | |
|------------|-------------------|-------------------|
| | 1/2NC | 1/2NF |
| 3/4" | SOC400075-50C-SET | SOC400075-50F-SET |
| 1" | SOC400100-50C-SET | SOC400100-50F-SET |
| 1-1/4" | SOC400125-50C-SET | SOC400125-50F-SET |
| 1-1/2" | SOC400150-50C-SET | SOC400150-50F-SET |

GASKET



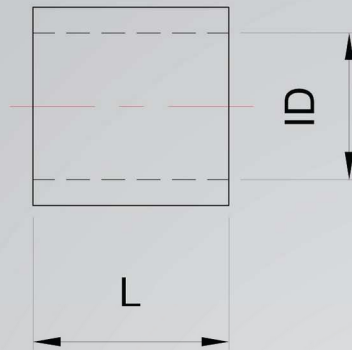
| OD | ID | | | |
|--------|---------|---------|---------|---------|
| | 1/4" | 5/16" | 3/8" | 1/2" |
| 1/2" | G050025 | G050031 | G050037 | G050050 |
| 3/4" | G075025 | G075031 | G075037 | G075050 |
| 1" | G100025 | G100031 | G100037 | G100050 |
| 1-1/2" | G150025 | G150031 | G150037 | G150050 |
| 2" | G200025 | G200031 | G200037 | G200050 |
| 2-1/2" | G250025 | G250031 | G250037 | G250050 |
| 3" | G300025 | G300031 | G300037 | G300050 |

STAINLESS STEEL SET SCREW



| Length | Thread (T) | | | | |
|--------|------------|------------|------------|------------|------------|
| | 1/4NC | 5/16NC | 3/8NC | 1/2NC | 1/2NF |
| 1/4" | SET025-25C | SET025-31C | SET025-37C | SET025-50C | SET025-50F |
| 1/2" | SET050-25C | SET050-31C | SET050-37C | SET050-50C | SET050-50F |
| 3/4" | SET075-25C | SET075-31C | SET075-37C | SET075-50C | SET075-50F |
| 1" | SET100-25C | SET100-31C | SET100-37C | SET100-50C | SET100-50F |
| 1-1/2" | SET150-25C | SET150-31C | SET150-37C | SET150-50C | SET150-50F |
| 2" | SET200-25C | SET200-31C | SET200-37C | SET200-50C | SET200-50F |
| 2-1/2" | SET250-25C | SET250-31C | SET250-37C | SET250-50C | SET250-50F |
| 3" | SET300-25C | SET300-31C | SET300-37C | SET300-50C | SET300-50F |
| 3-1/2" | SET350-25C | SET350-31C | SET350-37C | SET350-50C | SET350-50F |
| 4" | SET400-25C | SET400-31C | SET400-37C | SET400-50C | SET400-50F |

SLEEVES



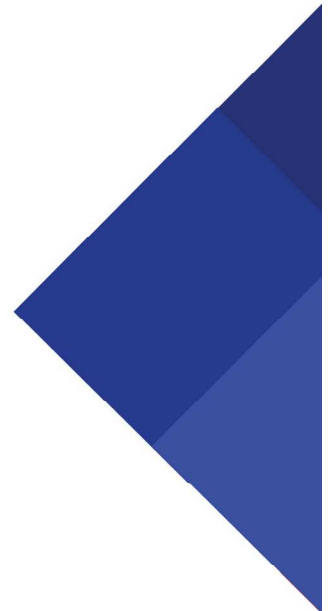
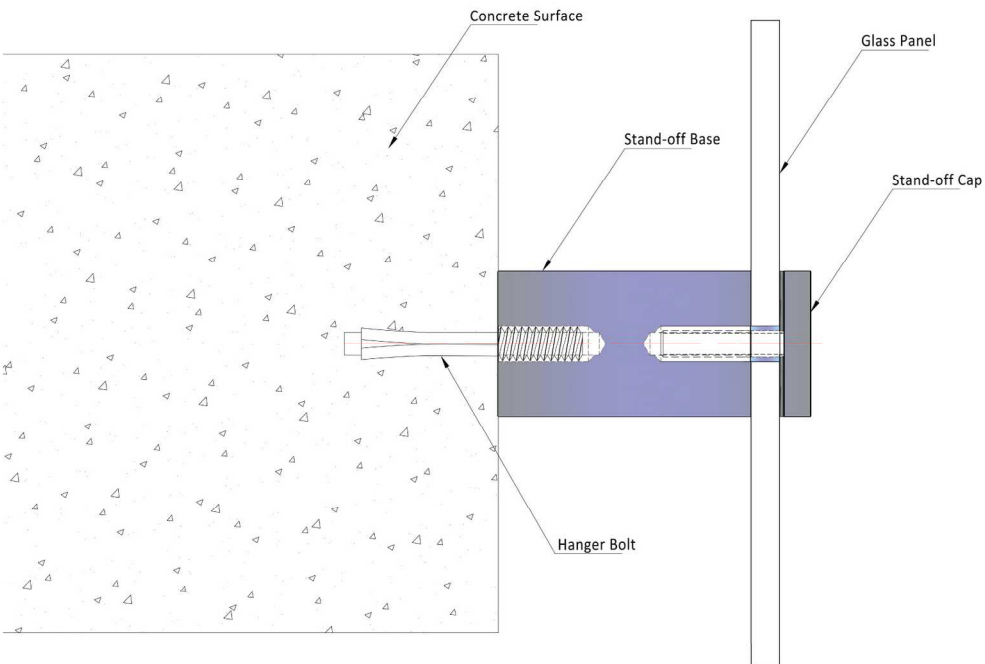
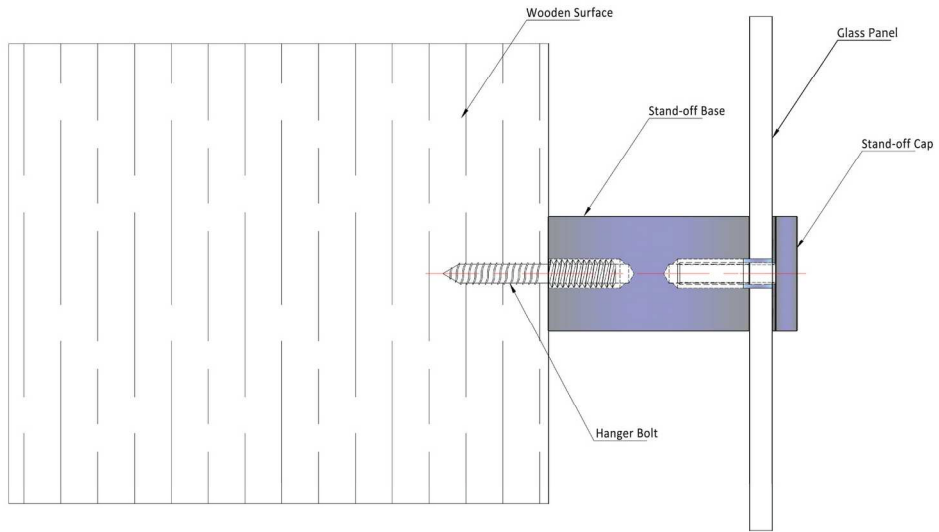
| Length | ID | | | |
|--------|----------|----------|----------|----------|
| | 1/4" | 5/16" | 3/8" | 1/2" |
| 1/4" | SL025025 | SL025031 | SL025037 | SL025050 |
| 1/2" | SL050025 | SL050031 | SL050037 | SL050050 |
| 3/4" | SL075025 | SL075031 | SL075037 | SL075050 |
| 1" | SL100025 | SL100031 | SL100037 | SL100050 |

STEEL HANGER BOLTS

| OAL | Machined Thread | | | |
|--------|-----------------|------------|------------|------------|
| | 1/4NC | 5/16NC | 3/8NC | 1/2NC |
| 2" | HBS200-25C | HBS200-31C | - | - |
| 2-1/2" | HBS250-25C | HBS250-31C | - | - |
| 3" | HBS300-25C | HBS300-31C | HBS300-37C | HBS300-50C |
| 3-1/2" | HBS350-25C | HBS350-31C | HBS350-37C | HBS350-50C |
| 4" | HBS400-25C | HBS400-31C | HBS400-37C | HBS400-50C |
| 5" | HBS500-25C | - | HBS500-37C | HBS500-50C |
| 6" | HBS600-25C | - | HBS600-37C | HBS600-50C |



* Stainless Steel hanger Bolts are available upon request.







LITERATURE DISCLAIMER

The information contained on the Literature is for general information only and is correct to the best of our knowledge at time of preparation.

The information provided is in form of recommendations only. Any advisory recommendations given in our publications must be modified to conform to local codes, conditions and specifications. Please consult a licensed engineer before installation to ensure your installation meets the local building codes.

We reserve all rights to amend any information published in our literature without additional notice. EMW Stainless cannot be held responsible or liable for the selection nor application of our products.

 235 41 Avenue NE, Calgary AB T2E 2N4

 403 919 5271

587 353 1150



sales@emwstainless.com
sandeep@emwstainless.com



www.emwstainless.com