






CLADDING

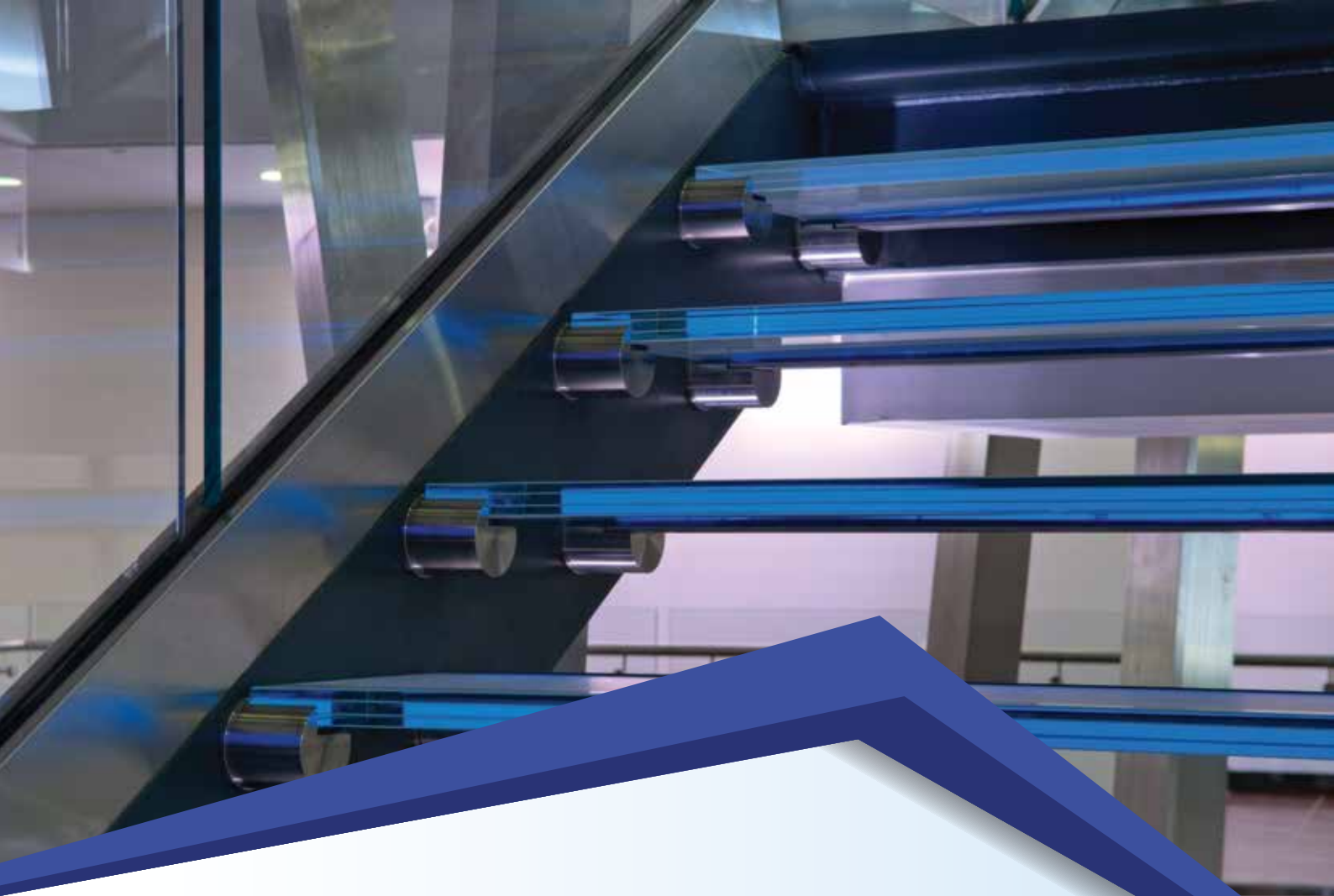
 #3, 3500 27 Street NE, T1Y 5E2

 403-452-3434

 403-452-3440

 sales@emwstainless.com

www.emwstainless.com



STAINLESS STEEL **CLADDING**

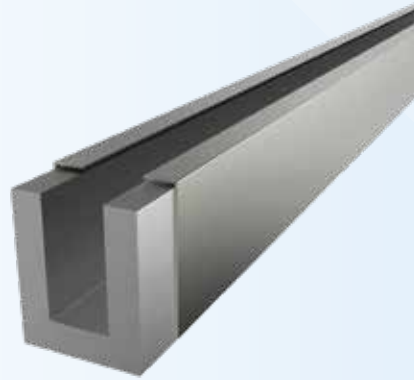
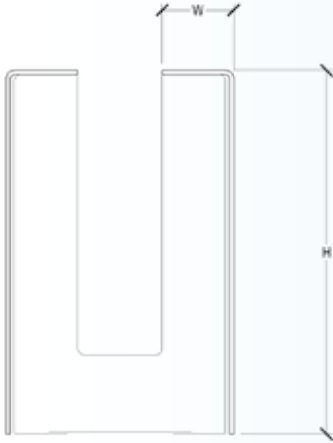
Stainless steel is the most popular material used for architectural wall cladding and is highly qualitative and sustainable solution to maintain the facade of a building throughout the years.

Stainless steel has a high durability, high strength and corrosion resistance. The metal panels will keep its appearance for several decades. Besides the fact that stainless steel cladding almost lasts a lifetime, the metal is very environment friendly.

We at EMW stainless offers varieties of claddings solutions. We offer claddings for base shoe at different sizes and lengths as well as custom claddings to suit any kind of application requirement. We offer cladding solutions to residential and commercial kitchen as well.

STRAIGHT CLADDING

FOR SQUARE BASE SHOE



Features

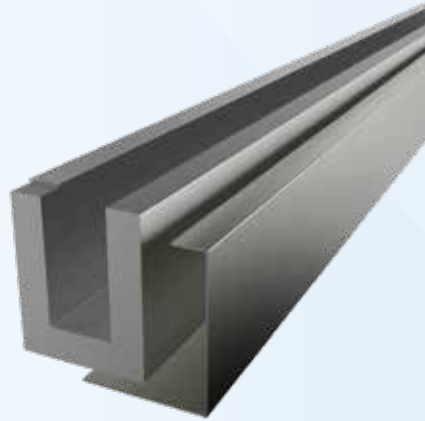
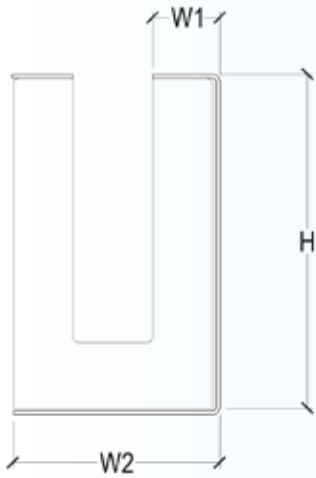
- Cladding can be secured to the base shoe by applying Cladding tape or Silicon Sealant.
- Claddings sold as an individual pieces.
- Usually it require a pair of cladding to cover both sides of base shoe.

Part Number	Width (W)	Height (H)	Length	Thickness	Material	Finish			
BSCS62418B	7/8"	4-3/16"	120"	0.035"	SS304	Brushed Finish			
BSCS62425B		4-1/4"							
BSCS62481B		4-13/16"							
BSCS62488B		4-7/8"							
BSCS68356B	11/16"	3-9/16"							
BSCS62418P	7/8"	4-3/16"				120"	0.035"	SS304	Polished Finish
BSCS62425P		4-1/4"							
BSCS62481P		4-13/16"							
BSCS62488P		4-7/8"							
BSCS68356P	11/16"	3-9/16"							

* Custom Sizes Available.

FASCIA CLADDING

FOR SQUARE BASE SHOE



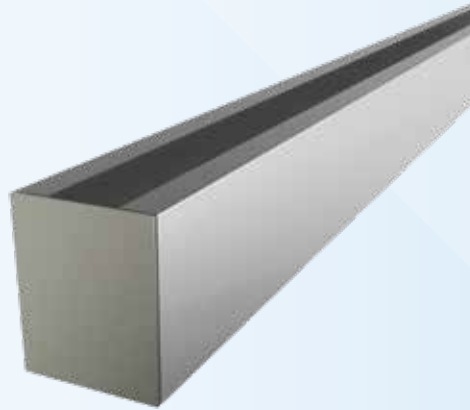
Features

- Cladding can be secured to the base shoe by applying Cladding tape or Silicon Sealant.
- Claddings sold as an individual pieces.

Part Number	Width (W1)	Width (W2)	Height (H)	Length	Thickness	Material	Finish
BSCF6241826B	7/8"	2-5/8"	4-3/16"	120"	0.035"	SS304	Brushed Finish
BSCF6242527B		2-3/4"					
BSCF6248130B		3"					
BSCF6248131B		3-1/8"					
BSCF6248133B		3-5/16"					
BSCF6248135B		3-1/2"					
BSCF6241826P		2-5/8"	4-3/16"				Polished Finish
BSCF6242527P		2-3/4"					
BSCF6248130P		3"					
BSCF6248131P		3-1/8"					
BSCF6248133P		3-5/16"					
BSCF6248135P		3-1/2"					

SQUARE END CAPS

FOR BASE SHOE



Features

- The End caps can be secured to the base shoe by using cladding tape or silicon sealant.
- End caps are sold separately.
- Custom sizes are also available.

Part Number	Width (W)	Height (H)	Thickness	Material	Finish
BSEC425268B	2- 11/16"	4-1/4"	0.035"	SS304	Brushed Finish
BSEC425281B	2- 13/16"				
BSEC425293B	2-15/16				
BSEC425306B	3-1/16				
BSEC425325B	3-1/4"	4-7/8"			
BSEC425337B	3-3/8"				
BSEC425356B	3-9/16"	4-7/8"			
BSEC425268P	2- 11/16"				Polished Finish
BSEC425281P	2- 13/16"				
BSEC425293P	2-15/16				
BSEC425306P	3-1/16				
BSEC425325P	3-1/4"	4-7/8"			
BSEC425337P	3-3/8"				
BSEC425356P	3-9/16"				



LITERATURE DISCLAIMER

The information contained on the Literature is for general information only and is correct to the best of our knowledge at time of preparation.

The information provided is in form of recommendations only. Any advisory recommendations given in our publications must be modified to conform to local codes, conditions and specifications. Please consult a licensed engineer before installation to ensure your installation meets the local building codes.

We reserve all rights to amend any information published in our literature without additional notice. EMW Stainless cannot be held responsible or liable for the selection nor application of our products.



#3, 3500 27 Street NE, T1Y 5E2



403-452-3434

403-452-3440



sales@emwstainless.com



www.emwstainless.com